

# Metro Themed Coins, Banknotes, Medals and Tokens

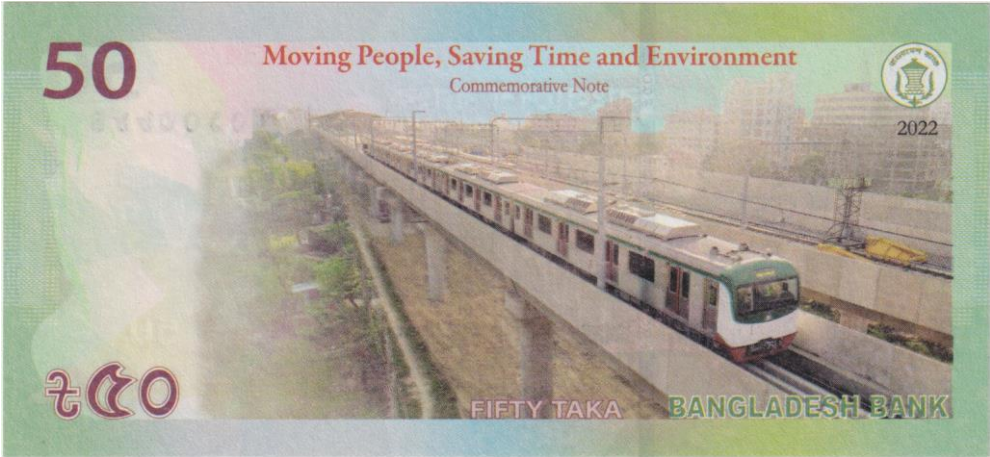
---

Official Coins and Banknotes.....	2
Bangladesh.....	2
Egypt.....	3
France.....	3
Germany.....	4
Great Britain.....	4
Liberia.....	4
Mongolia.....	5
Niue.....	5
Russia.....	5
Singapore.....	6
Turkey.....	6
Zambia.....	6
Commemorative Coins and Medals.....	7
Canada.....	7
Czechia.....	7
Hungary.....	7
Germany.....	8
Great Britain.....	11
Greece.....	12
Mexico.....	12
Tokens.....	13
Argentina.....	13
Armenia.....	14
Australia.....	15
Azerbaijan.....	15
Belarus.....	16
Brasilia.....	18
Canada.....	18
Chile.....	20
China.....	21
Georgia.....	33
Germany.....	34
Great Britain.....	36
India.....	36
Israel.....	37
Italy.....	38
Kazakhstan.....	38
Malaysia.....	38
Philippines.....	39
Russia.....	39
South Korea.....	45
Taiwan.....	49
Thailand.....	53
Turkey.....	55
Ukraine.....	56
USA.....	68
Uzbekistan.....	75

# Official Coins and Banknotes

## Bangladesh

2022 Inauguration of MRT Line 6



50 Taka

60,0 x 130,0 mm 0,0 mm 0,8 g paper

---

## Egypt

### 1987 Opening of Cairo Metro



5 Pounds

🌀 37,2 mm 🌀 1,8 mm 🌀 17,6 g 🌀 720er silver

### 1989 Opening of Cairo Metro



20 Piastres

🌀 27,0 mm 🌀 1,3 mm 🌀 6,0 g 🌀 copper-nickel

### 1999 Metro Tunnel under Nile



1 Pound

🌀 24,0 mm 🌀 ? mm 🌀 8,0 g 🌀 875er gold

5 Pounds

🌀 37,0 mm 🌀 2,0 mm 🌀 17,5 g 🌀 900er silver

---

## France

### 1998 VAL, Metro of Toulouse



2 Euros

🌀 30,0 mm 🌀 1,9 mm 🌀 11,0 g 🌀 copper-nickel

---

## Germany

### 2002 100 Jahre U-Bahn



10 Euros

🌀 32,5 mm 🌀 2,2 mm 🌀 18,0 g 🌀 925er silver

---

## Great Britain

### 2013 150th Anniversary of London Underground



2 Pounds London Underground Train

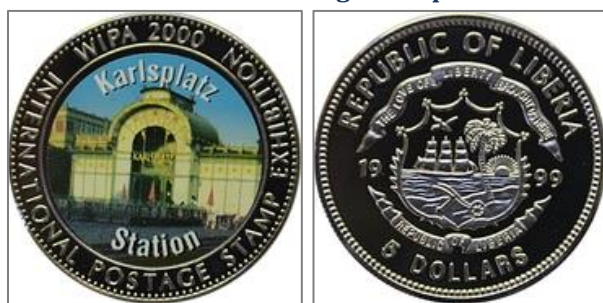
2 Pounds London Underground Logo

🌀 28,4 mm 🌀 2,5 mm 🌀 12,0 g 🌀 900er bimetallic: copper-nickel centre in nickel-brass ring

---

## Liberia

### 1999 International Postage Stamp Exhibition



5 Dollars Karlsplatz Station

🌀 38,6 mm 🌀 ? mm 🌀 28,0 g 🌀 copper-nickel



---

## Mongolia

### 2007 Mytishichinsky Carriage Works



250 Tögrög

🌀 33,0 mm 🌀 2,3 mm 🏰 15,5 g 🍷 999er silver

---

## Niue

### 2010 Soviet Transport - Metro



2 Dollars

🌀 40,7 mm 🌀 2,3 mm 🏰 31,1 g 🍷 999er silver

---

## Russia

### 2005 Metro Station „Kropotkinskaya“ Moscow



3 Rubles

🌀 39,0 mm 🌀 3,3 mm 🏰 33,94 g 🍷 925er silver

### 2020 Moscow Metro



1 Ruble

🌀 25,0 mm 🌀 2,2 mm 🏰 8,53 g 🍷 925er silver

---

## Singapore

### 1989 Mass Rapid Transit



5 Dollars

🌀 38,8 mm 🌀 2,5 mm 🕯️ 20,3 g 🍷 copper-nickel

5 Dollars

🌀 38,8 mm 🌀 2,5 mm 🕯️ 21,6 g 🍷 925er silver

---

## Turkey

### 1989 Istanbul Metro



20000 Lira

🌀 38,6 mm 🌀 2,3 mm 🕯️ 23,0 g 🍷 925er silver

---

## Zambia

### 1998 Taipei Metro



4000 Kwacha

🌀 ? mm 🌀 ? mm 🕯️ 31 g 🍷 999er silver

## Commemorative Coins and Medals

---

### Canada

#### 1986 Opening Vancouver Skytrain



Commemorative coin by BC Transit

🌀 26,0 mm 🌀 2,0 mm 🌀 10,0 g 🌀 bronze

---

### Czechia

#### 2014 40 Years Prague Metro



Medal

🌀 37,0 mm 🌀 3,0 mm 🌀 31,2 g 🌀 copper

---

### Hungary

#### 2021 125 Years Budapest Millennium Underground Railway



2000 Forint Medal

🌀 39,6 x 26,4 mm 🌀 3,2 mm 🌀 26,8 g 🌀 copper-nickel

## Germany

### 1972 Nürnberg U-Bahn-Eröffnung



Medal

45,0 mm 3,5 mm 49,5 g silver

### 1978 Nürnberg U-Bahn – Erste Fahrt in die Altstadt



Medal by City of Nuremberg

42,0 mm ? mm 29,0 g 1000er silver

### 1979 50 Jahre BVG



Medal

40,0 mm ? mm 23,0 g silver

### 1980 Nürnberg U-Bahn-Eröffnung - Fürther Str.



Medal

20,5 mm 1,4 mm 2,7 g tin

Medal

20,5 mm 1,4 mm 4,0 g silver



**1981 100 Jahre Stadtverkehr in Nürnberg und Fürth**



Medal by Stadtsparkasse Nürnberg

🌀 42,1 mm 🌀 2,6 mm 🏆 29,0 g 🥈 1000er silver

**1982 U-Bahn in Fürth**



Medail by Medaillenkunst

🌀 35,2 mm 🌀 1,6 mm 🏆 15,85 g 🥈 silver

**1983 U-Bahn Nürnberg-Fürth – Endhaltestelle Röthenbach**



Medal by Medaillenkunst

🌀 35,2 mm 🌀 ? mm 🏆 14,92 g 🥈 silver

**1984 U-Bahn Nürnberg – Eröffnung Stammlinie 2 – Plärrer-Schweinau**



Medal

🌀 ? mm 🌀 ? mm 🏆 ? g 🥈 silver

**1984 Berlin U-Bahn-Rathaus-Spandau**



Medal

35,3 mm 2,1 mm 14,9 g 999er silver

**1985 U-Bahn in Fürth - Hauptbahnhof**



Medal

20,0 mm ? mm 5,02 g gold

**1988 München U-Bahn-Eröffnung - Haidhausen**



Medal

30,2 mm 2,2 mm 9,8 g tin

**1998 Fürth U-Bahn-Eröffnung - Hauptbahnhof - Rathaus - Stadthalle**



Medal by Medaillenkunst

35,3 mm 2,1 mm 15,0 g 999er silver

**2002 100 Jahre U-Bahn**



Medal

35,0 mm 2,2 mm 16,5 g silver plated

## 2002 100 Jahre U-Bahn



Commemorative Medal to 10 Euro Coin

🌀 36,0 mm 🌀 3,0 mm 🌀 23,0 g 🌀 999er silver

---

## Great Britain

### 1993 London Underground Diamond Jubilee



Commemorative Coin by London Underground

🌀 38,0 mm 🌀 3,0 mm 🌀 ? g 🌀 bronze

### 2008 Memories of Wartime Britain - Underground Shelters



Commemorative Coin by The Imperial War Museum

🌀 38,6 mm 🌀 2,0 mm 🌀 20,3 g 🌀 925er silver

### 2012 The London Underground 1863



Commemorative Coin by Windsor Mint

🌀 40,0 mm 🌀 3,0 mm 🌀 28,0 g 🌀 copper, silver plated with gold spot



## 2018 London Underground



Commemorative Coin by The Commemorative Coin Company

🕒 27,0 mm 🌀 2,0 mm ⚖️ 8,5 g 🏆 silver plated with 999er silver or gold plated with 24 carat gold

## Greece

### 1993 Attiko Metro



Commemorative Medal

🕒 59,8 mm 🌀 5,5 mm ⚖️ 41,1 g 🏆 aluminium

## Mexico

### 2008 20 Years Servicio de la ciudad de Mexico



Medal

🕒 50,1 mm 🌀 3,8 mm ⚖️ 62,2 g 🏆 silver



# Tokens

## Argentina

### Buenos Aires



1930 to 1939

21,2 mm 1,4 mm 3,4 g bronze



1962 to 1969

18,4 mm 2,5 mm 1,5 g aluminium



1969 to 1974

18,4 mm 2,5 mm 1,5 g aluminium



1974 to 1977

20,0 mm 2,4 mm 1,7 g aluminium



1977 to 1979

24,8 mm 2,6 mm 2,6 g aluminium



1979 to 1994

18,4 mm 2,4 mm 1,4 g aluminium



1994 to 2000 (normal font)

19,7 mm 2,0 mm 1,4 g aluminium



1994 to 2000 (bold font)

19,7 mm 2,0 mm 1,3 g aluminium

Blister 1994 to 2000 Metrovias



Blister 1994 to 2000 Banca del Suquia



2000

🌀 20,0 mm 🌀 ? mm 🌀 2,0 g 🌀 yellow metal

## Armenia

### Yerevan



1992 (bold font, large distance at separator)

🌀 20,5 mm 🌀 1,5 mm 🌀 3,8 g 🌀 brass



1992 (thin font, large distance at separator)

🌀 20,5 mm 🌀 1,5 mm 🌀 3,9 g 🌀 brass



1992 (bold font, small distance at separator)

🌀 20,9 mm 🌀 1,5 mm 🌀 3,9 g 🌀 brass



1992 (thin font, small distance at separator)

🌀 20,9 mm 🌀 1,5 mm 🌀 4,1 g 🌀 brass



1995

🌀 25,0 mm 🌀 2,2 mm 🌀 1,0 g 🌀 plastic (transparent)



1995

🌀 25,0 mm 🌀 1,9 mm 🌀 0,8 g 🌀 plastic (orange, transparent)



late 1990s

🌀 25,0 mm 🌀 1,5 mm 🌀 0,8 g 🌀 plastic (brown)



early 2000s

🌀 23,8 mm 🌀 1,9 mm 🌀 0,9 g 🌀 plastic (black)



early 2000er

🌀 23,8 mm 🌀 1,9 mm 🌀 0,9 g 🌀 plastic (brown)



2009 and 2019

🌀 23,8 mm 🌀 1,7 mm 🌀 0,6 g 🌀 plastic (red, transparent)

---

## Australia

### Sydney



1988

🌀 27,0 mm 🌀 2,1 mm 🌀 8,2 g 🌀 copper-nickel

---

## Azerbaijan

### Baku



1992 to 1996 (small „M“)

🌀 19,8 mm 🌀 1,8 mm 🌀 4,0 g 🌀 brass



1992 to 1996 (convex font)

🌀 20,2 mm 🌀 1,2 mm 🌀 3,1 g 🌀 brass





1992 to 1996 (flat font)

🌀 20,2 mm 🌀 1,2 mm 🇮🇷 3,0 g 🇮🇷 brass



1997

🌀 24,8 mm 🌀 2,0 mm 🇮🇷 0,7 g 🇮🇷 plastic (blue green)



1997 (30 Years Metro Baku)

🌀 24,8 mm 🌀 2,2 mm 🇮🇷 0,8 g 🇮🇷 plastic (blue)



1997 (30 Years Metro Baku)

🌀 24,8 mm 🌀 1,8 mm 🇮🇷 0,7 g 🇮🇷 plastic (red)



1997 (30 Years Metro Baku)

🌀 24,8 mm 🌀 2,0 mm 🇮🇷 0,8 g 🇮🇷 plastic (green)

---

## Belarus

### Minsk



1992 (small inlay, small M)

🌀 24,0 mm 🌀 2,2 mm 🇮🇷 1,7 g 🇮🇷 plastic (pink)



1992 (small inlay, large M)

🌀 24,0 mm 🌀 2,1 mm 🇮🇷 1,6 g 🇮🇷 plastic (pink)



1992 (small inlay, bold M)

🌀 24,0 mm 🌀 2,2 mm 🇮🇷 1,7 g 🇮🇷 plastic (pink)

1992 (small inlay, round M)



24,0 mm 2,2 mm 1,7 g plastic (pink)



1992 (small inlay, small M, coin alignment)

24,0 mm 2,2 mm 1,7 g plastic (pink)



1992 (large inlay, small M)

24,0 mm 2,2 mm 1,7 g plastic (pink)



1992 (large inlay, large M)

24,0 mm 2,2 mm 1,7 g plastic (pink)

1992 (large inlay, bold M)

24,0 mm 2,2 mm 1,7 g plastic (pink)

1992 (large inlay, round M)

24,0 mm 2,2 mm 1,7 g plastic (pink)



2014 (30 Years Minsk Metro – Akademiya Navuk)

24,0 mm 2,2 mm 1,7 g plastic (pink)



2014 (30 Years Minsk Metro – Instytut Kultury)

24,0 mm 2,2 mm 1,7 g plastic (pink)



2014 (30 Years Minsk Metro – Kastrыchnitskaya)

24,0 mm 2,2 mm 1,7 g plastic (pink)



2014 (30 Years Minsk Metro – Maskowskaya)

24,0 mm 2,2 mm 1,7 g plastic (pink)



2014 (30 Years Minsk Metro – Park Chalyuskintzaw)  
🌀 24,0 mm 🌀 2,2 mm 🌀 1,7 g 🌀 plastic (pink)



2014 (30 Years Minsk Metro – Ploshcha Lenina)  
🌀 24,0 mm 🌀 2,2 mm 🌀 1,7 g 🌀 plastic (pink)



2014 (30 Years Minsk Metro – Ploshcha Pyerimohi)  
🌀 24,0 mm 🌀 2,2 mm 🌀 1,7 g 🌀 plastic (pink)



2014 (30 Years Minsk Metro – Ploshcha Yakuba Kolsas)  
🌀 24,0 mm 🌀 2,2 mm 🌀 1,7 g 🌀 plastic (pink)

---

## Brasilia

### São Paulo



1974  
🌀 19,1 mm 🌀 1,0 mm 🌀 2,2 g 🌀 steel

---

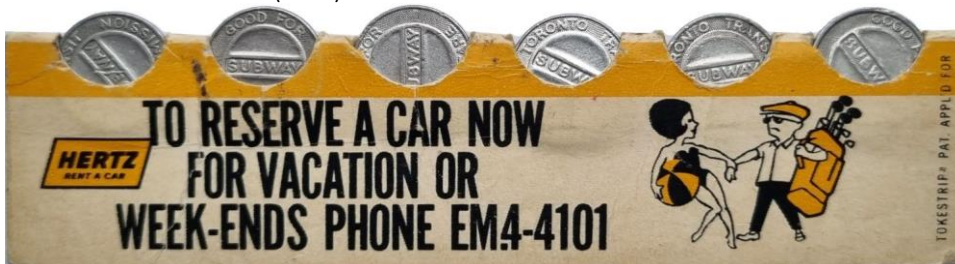
## Canada

### Toronto



1954 to 1966  
🌀 16,4 mm 🌀 1,2 mm 🌀 0,6 g 🌀 aluminium

Token holder 1954 to 1966 (Hertz)





Token holder 1954 to 1966 (The Pet Milk)



1954 to 1966

16,4 mm 1,2 mm 0,6 g aluminium (red enamelled)



1966

16,5 mm 1,2 mm 1,9 g brass

1966 - „First Day“ Token – Opening of Bloor-Danforth-Line February 26th 1966







1968 (Extension of Bloor-Danforth-Line to ETOBICOKE)  
16,5 mm 1,3 mm 2,1 g brass



1968 (Extension of Bloor-Danforth-Line to Scarborough)  
16,5 mm 1,3 mm 2,1 g brass



1975  
16,4 mm 1,2 mm 0,6 g aluminium



1978 (with mintmark)  
16,5 mm 1,2 mm 0,6 g aluminium



2006 to 2008  
16,4 mm 1,3 mm 1,6 g bimetallic

---

## Chile

### Santiago de Chile



1987 (dodecagonal)  
26,8 mm 1,6 mm 2,1 g aluminium



1987  
28,0 mm 2,2 mm 3,2 g aluminium



1990  
??,0 mm ? mm ??,? g aluminium



---

## China

### Beijing



? (locker oder WC token)

🌀 25,0 mm 🌀 1,8 mm 🧊 6,7 g 🌀 steel

### Changsha



2014

🌀 30,0 mm 🌀 3,0 mm 🧊 2,4 g 🌀 plastic (blue)



2016 (Maglev)

🌀 30,0 mm 🌀 3,0 mm 🧊 2,5 g 🌀 plastic (dark green)

### Dongguan



2016

🌀 30,0 mm 🌀 2,2 mm 🧊 1,9 g 🌀 plastic (blue)

### Foshan



2010

🌀 30,0 mm 🌀 2,0 mm 🧊 1,9 g 🌀 plastic (blue)

### Fuzhou



2016

🌀 30,0 mm 🌀 3,0 mm 🧊 2,5 g 🌀 plastic (red)



2021

🌀 30,0 mm 🌀 3,0 mm 🧊 2,7 g 🍃 plastic (dark red)

## Guangzhou



1997? (obverse with number)

🌀 30,0 mm 🌀 2,0 mm 🧊 1,6 g 🍃 plastic (black)



1997?

🌀 30,0 mm 🌀 2,1 mm 🧊 1,8 g 🍃 plastic (black)



1999 (reverse without number)

🌀 30,0 mm 🌀 2,0 mm 🧊 1,8 g 🍃 plastic (dark green)



1999 (reverse with number, small font, two dots as separator)

🌀 30,0 mm 🌀 1,9 mm 🧊 1,8 g 🍃 plastic (dark green)



1999 (reverse with number, large font, two dots as separator)

🌀 30,0 mm 🌀 1,9 mm 🧊 1,8 g 🍃 plastic (dark green)



1999 (reverse with number, three dots as separator)

🌀 30,0 mm 🌀 2,1 mm 🧊 1,9 g 🍃 plastic (dark green)



2010er? (Guangzhou Metro Museum)

🌀 30,2 mm 🌀 2,0 mm 🌀 1,5 g 🌀 plastic (yellow, grey)



2018 (Guangzhou Metro Museum: Commemorative Ticket)

🌀 30,0 mm 🌀 2,2 mm 🌀 1,7 g 🌀 plastic (yellow)



2018 (Guangzhou Metro Museum: Commemorative Ticket)

🌀 30,0 mm 🌀 2,2 mm 🌀 1,7 g 🌀 plastic (light green)



2018 (Guangzhou Metro Museum: Commemorative Ticket)

🌀 30,0 mm 🌀 2,2 mm 🌀 1,7 g 🌀 plastic (light blue)



2018 (Guangzhou Metro Museum: Commemorative Ticket)

🌀 30,0 mm 🌀 2,2 mm 🌀 1,7 g 🌀 plastic (blue)



2018 (Guangzhou Metro Museum: Commemorative Ticket)

🌀 30,0 mm 🌀 2,2 mm 🌀 1,8 g 🌀 plastic (violet)



2018 (Guangzhou Metro Museum: Commemorative Ticket)

🌀 30,0 mm 🌀 2,2 mm 🌀 1,8 g 🌀 plastic (pink)



2018 (Guangzhou Metro Museum: Commemorative Ticket)  
 Ⓞ 30,0 mm Ⓜ 2,2 mm ⚖️ 1,8 g 🔄 plastic (red)



2018 (Guangzhou Metro Museum: Commemorative Ticket)  
 Ⓞ 30,0 mm Ⓜ 2,2 mm ⚖️ 1,7 g 🔄 plastic (orange)

### Macau



2019  
 Ⓞ 30,0 mm Ⓜ 3,0 mm ⚖️ 2,4 g 🔄 plastic (blue)



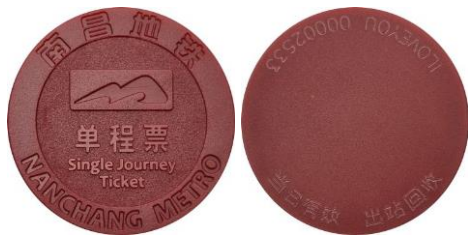
2019 (concessionary ticket)  
 Ⓞ 30,0 mm Ⓜ 3,0 mm ⚖️ 2,7 g 🔄 plastic (green)

### Nanchang

Commemorative issue for the opening of the Nanchang Metro 2015



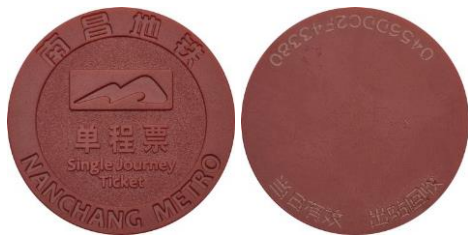




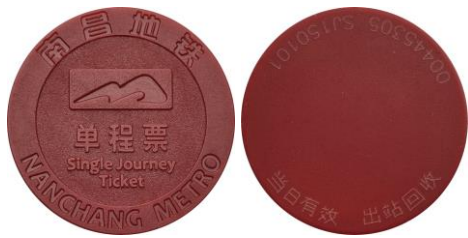
2015 (Commemorative issue for the opening of the Nanchang Metro)  
 30,0 mm 2,1 mm 1,9 g plastic (dark red)



2015 (Commemorative issue for the opening of the Nanchang Metro)  
 30,0 mm 2,4 mm 15,1 g silver



2015  
 30,0 mm 2,1 mm 1,9 g plastic (dark red)



2015 (two numbers)  
 30,0 mm 2,1 mm 1,9 g plastic (dark red)



2021  
 30,0 mm 2,0 mm 1,7 g plastic (dark red)

## Nanjing



2005 (opening Nanjing Metro: no. 1)  
 30,0 mm 3,0 mm 2,3 g plastic (brown-beige)



2005 (opening Nanjing Metro: no. 2)  
 30,0 mm 3,0 mm 2,3 g plastic (brown-beige)



2005 (opening Nanjing Metro: no. 3)  
30,0 mm 3,0 mm 2,3 g plastic (brown-beige)



2005 (opening Nanjing Metro: no. 4)  
30,0 mm 3,0 mm 2,3 g plastic (brown-beige)



2005 (opening Nanjing Metro: no. 5)  
30,0 mm 3,0 mm 2,3 g plastic (brown-beige)



2005 (opening Nanjing Metro: no. 6)  
30,0 mm 3,0 mm 2,3 g plastic (brown-beige)



2005 (opening Nanjing Metro: no. 7)  
30,0 mm 3,0 mm 2,3 g plastic (brown-beige)



2005 (opening Nanjing Metro: no. 8)  
30,0 mm 3,0 mm 2,3 g plastic (brown-beige)



2005 (opening Nanjing Metro: no. 9)  
30,0 mm 3,0 mm 2,3 g plastic (brown-beige)



2005 (opening Nanjing Metro: no. 10)

🌀 30,0 mm 🌀 3,0 mm 🍷 2,3 g 🍷 plastic (brown-beige)



2005 (opening Nanjing Metro: no. 11)

🌀 30,0 mm 🌀 3,0 mm 🍷 2,3 g 🍷 plastic (brown-beige)



2005 (opening Nanjing Metro: no. 12)

🌀 30,0 mm 🌀 3,0 mm 🍷 2,3 g 🍷 plastic (brown-beige)



2005 (opening Nanjing Metro: no. 13)

🌀 30,0 mm 🌀 3,0 mm 🍷 2,3 g 🍷 plastic (brown-beige)



2005 (opening Nanjing Metro: no. 14)

🌀 30,0 mm 🌀 3,0 mm 🍷 2,3 g 🍷 plastic (brown-beige)



2005 (opening Nanjing Metro: no. 15)

🌀 30,0 mm 🌀 3,0 mm 🍷 2,3 g 🍷 plastic (brown-beige)



2005 (opening Nanjing Metro: no. 16)

🌀 30,0 mm 🌀 3,0 mm 🍷 2,3 g 🍷 plastic (brown-beige)





2005

🌀 30,0 mm 🌀 3,0 mm 🍷 2,5 g 🍷 plastic (dark blue)



2005 (reverse small font)

🌀 30,0 mm 🌀 3,0 mm 🍷 2,5 g 🍷 plastic (dark blue)



2014 (reverse with three lines, reverse rotated by 90°)

🌀 30,0 mm 🌀 3,0 mm 🍷 2,5 g 🍷 plastic (blue)



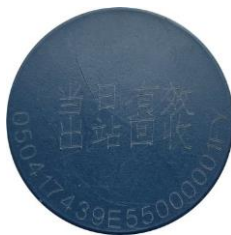
2014 (reverse grey writing)

🌀 30,0 mm 🌀 3,0 mm 🍷 2,6 g 🍷 plastic (blue)



2014 (reverse white writing)

🌀 30,0 mm 🌀 3,0 mm 🍷 2,5 g 🍷 plastic (blue)



2018

🌀 30,0 mm 🌀 3,0 mm 🍷 2,4 g 🍷 plastic (blue)



2018 (reverse rotated by 90°)

🌀 30,0 mm 🌀 3,0 mm 🍷 2,4 g 🍷 plastic (blue)



## Nanning



2016

30,0 mm 3,0 mm 2,6 g plastic (blue)

## Shenzhen



2004?

30,0 mm 3,0 mm 2,5 g plastic (green)

2004?

30,0 mm 2,2 mm ? ,7 g plastic (green)

2004?

30,0 mm 2,2 mm ? ,7 g plastic (yellow)



2011

30,0 mm 3,0 mm 2,5 g plastic (green)



2011 (reverse with large font)

30,0 mm 3,0 mm 2,4 g plastic (green)



2016

30,0 mm 3,0 mm 2,5 g plastic (yellow)

## Tianjin



2006 (opening Tianjin Metro)

30,0 mm 3,0 mm 2,2 g plastic (grey)



2006? (emergency token)

○ 30,0 mm    ⬭ 3,0 mm    ⚖️ 2,5 g    🗑️ plastic (orange)



2006? (Agricultural Bank of China)

○ 30,0 mm    ⬭ 3,0 mm    ⚖️ 2,5 g    🗑️ plastic (green)



2015 (test token)

○ 30,0 mm    ⬭ 3,0 mm    ⚖️ 2,5 g    🗑️ plastic (green)



2015 (reverse only with number)

○ 30,0 mm    ⬭ 3,0 mm    ⚖️ 2,5 g    🗑️ plastic (green)



2015 (reverse only with number, large font)

○ 30,0 mm    ⬭ 3,0 mm    ⚖️ 2,4 g    🗑️ plastic (green)



2015 (reverse with one line)

○ 30,0 mm    ⬭ 3,0 mm    ⚖️ 2,5 g    🗑️ plastic (green)



2015 (reverse with two lines)

○ 30,0 mm    ⬭ 3,0 mm    ⚖️ 2,5 g    🗑️ plastic (green)



2015 (emergency token)

🕒 30,0 mm 🌀 3,0 mm 🏊 2,5 g 🍷 plastic (orange)

Commemorative issue with 6 tokens in an album in the colours of the lines (2020)  
On reverse the Chinese Fu sign (luck) is designed by famous calligraphers.



2020 (Commemorative issue, Fu-sign/luck)

🕒 30,0 mm 🌀 3,0 mm 🏊 2,6 g 🍷 plastic (red)



2020 (Commemorative issue Fu-sign/luck)

🕒 30,0 mm 🌀 3,0 mm 🏊 2,5 g 🍷 plastic (yellow)



2020 (Commemorative issue, Fu-sign/luck)

🕒 30,0 mm 🌀 3,0 mm 🏊 2,6 g 🍷 plastic (blue)



2020 (Commemorative issue, Fu-sign/luck)

🕒 30,0 mm 🌀 3,0 mm 🏊 2,6 g 🍷 plastic (orange)





2020 (Commemorative issue, Fu-sign/luck)  
○ 30,0 mm   ○ 3,0 mm   ⚖ 2,6 g   🗑 plastic (violet)



2020 (Commemorative issue, Fu-sign/luck)  
○ 30,0 mm   ○ 3,0 mm   ⚖ 2,6 g   🗑 plastic (dark blue)

## Wuhan



2004  
○ 30,0 mm   ○ 3,0 mm   ⚖ 2,3 g   🗑 plastic (dark blue)



2010? (test token)  
○ 30,0 mm   ○ 3,0 mm   ⚖ 2,5 g   🗑 plastic (yellow)



2010? (test token)  
○ 30,0 mm   ○ 3,0 mm   ⚖ 2,4 g   🗑 plastic (light green)



2010?  
○ 30,0 mm   ○ 3,0 mm   ⚖ 2,4 g   🗑 plastic (blue)



2015  
○ 30,0 mm   ○ 3,0 mm   ⚖ 2,6 g   🗑 plastic (blue)





2016

30,0 mm 3,0 mm 2,6 g plastic (blue)



2017

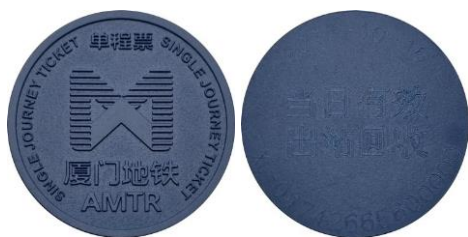
30,0 mm 3,0 mm 2,4 g plastic (blue)



2019

30,0 mm 3,0 mm 2,4 g plastic (blue)

## Xiamen



2017

30,0 mm 3,0 mm 2,4 g plastic (blue)

---

## Georgia

### Tbilisi



1992 to 1994

22,0 mm 1,4 mm 3,8 g brass



1994 to 1997 (medal alignment)

22,0 mm 1,6 mm 1,1 g plastic (black)



1994 to 1997 (coin alignment)

22,0 mm 1,6 mm 1,1 g plastic (black)



1997 to 2008

22,0 mm 2,0 mm 0,5 g plastic (red)



2008

22,0 mm 2,0 mm 0,6 g plastic (orange, transparent)



2008

22,0 mm 2,0 mm 0,6 g plastic (light blue)

## Germany

### Berlin







1922 (2 Mark)

🌀 86,0 x 61,0 mm 🌀 0,0 mm 🍷 0,4 g 📄 paper

### Hamburg



1920 to 1921

🌀 35,0 x 35,0 mm 🌀 0,4 mm 🍷 0,4 g  
📄 cardboard (creme and brown, print grey)



1920 to 1921

🌀 32,8 x 32,8 mm 🌀 0,4 mm 🍷 0,4 g  
📄 cardboard (creme and pink, print brown)



1920 to 1921

🌀 25,6 mm 🌀 3,7 mm 🍷 3,5 g  
📄 Böttger Steinzeug (Porzellanmanufaktur Meißen)



1921 to 1922

🌀 22,4 x 22,4 mm 🌀 1,1 mm 🍷 4,0 g 📄 iron



1921 to 1922

🌀 25,8 mm 🌀 1,1 mm 🍷 3,8 g 🍷 iron



1923

🌀 35,0 x 35,0 mm 🌀 0,4 mm 🍷 0,4 g

🍷 cardboard (grey green, print black)



1959 to 1963

🌀 17,9 mm 🌀 1,6 mm 🍷 3,0 g 🍷 copper-nickel

## Great Britain

### National Transport Token - Metrocar



1981

🌀 25,0 mm 🌀 1,4 mm 🍷 1,5 g 🍷 aluminium

## India

### Delhi



2016 (large font)

🌀 30,0 mm 🌀 3,0 mm 🍷 2,7 g 🍷 plastic



2016 (small font)

🌀 30,0 mm 🌀 3,0 mm 🍷 2,7 g 🍷 plastic

2017 (Airport Line)

🌀 30,0 mm 🌀 ? mm 🍷 2,7 g 🍷 plastic





2017 (LIC insurance)

🌀 30,0 mm 🌀 3,0 mm 🍷 2,6 g 🍷 plastic

## Jaipur



2015

🌀 30,0 mm 🌀 3,0 mm 🍷 2,5 g 🍷 plastic (orange)

## Kolkata



1997

🌀 30,0 mm 🌀 3,0 mm 🍷 2,6 g 🍷 plastic (black)



1997

🌀 30,0 mm 🌀 3,0 mm 🍷 2,6 g 🍷 plastic (yellow)

## Mumbai



2014

🌀 30,0 mm 🌀 3,0 mm 🍷 2,4 g 🍷 plastic (grey)

## Israel

### Haifa



1959 (Carmelit)

🌀 15,0 mm 🌀 1,8 mm 🍷 2,1 g 🍷 brass



1959 (Carmelit)

🌀 17,0 mm 🌀 1,8 mm 🍷 2,8 g 🍷 copper-nickel



1986 (Carmelit)

17,0 mm 1,6 mm 2,8 g copper-nickel

---

## Italy

### Rome



1955

25,0 mm 1,6 mm 6,6 g copper-nickel

---

## Kazakhstan

### Almaty



2011

29,9 mm 3,0 mm 2,2 g plastic (yellow)



2013

30,0 mm 3,0 mm 2,2 g plastic (red coloured)



2015 (for children)

30,0 mm 3,0 mm 1,8 g plastic (red)

---

## Malaysia

### Kuala Lumpur



2011 to 2017

30,0 mm 3,0 mm 2,4 g plastic (blue)



2015

🌀 30,0 mm 🌀 3,0 mm 🏺 2,4 g 🗡️ plastic (blue)



2015

🌀 30,0 mm 🌀 3,0 mm 🏺 2,4 g 🗡️ plastic (red)



2016

🌀 30,0 mm 🌀 3,0 mm 🏺 2,4 g 🗡️ plastic (blue)



2017

🌀 30,0 mm 🌀 3,0 mm 🏺 2,4 g 🗡️ plastic (blue)

---

## Philippines

### Manila



1984 to 1998

🌀 26,6 mm 🌀 2,1 mm 🏺 9,2 g 🗡️ brass

---

## Russia

### Yekaterinburg



1992

🌀 25,0 mm 🌀 1,5 mm 🏺 0,9 g 🗡️ plastic (blue)





1992

🌀 25,0 mm 🌀 1,5 mm 🏊 0,9 g 🏊 plastic (light grey)



1992

🌀 25,0 mm 🌀 1,5 mm 🏊 0,9 g 🏊 plastic (grey)



1992

🌀 25,0 mm 🌀 1,5 mm 🏊 0,9 g 🏊 plastic (black)



1992 (large distance between „E“ and „K“)

🌀 25,0 mm 🌀 1,5 mm 🏊 0,9 g 🏊 plastic (light grey)



1994

🌀 25,0 mm 🌀 1,6 mm 🏊 5,3 g 🏊 copper-plated steel



1995

🌀 25,0 mm 🌀 1,6 mm 🏊 5,4 g 🏊 steel

## Kazan



2005 (1000 Years Kazan)

🌀 30,0 mm 🌀 3,0 mm 🏊 1,8 g 🏊 plastic (yellow)



2005 (1000 Years Kazan)

🌀 30,0 mm 🌀 3,0 mm 🏊 1,8 g 🏊 plastic (pink)



2005 (1000 Years Kazan)

🌀 30,0 mm 🌀 3,0 mm 🏺 1,8 g 🍷 plastic (violet)



2005 (1000 Years Kazan)

🌀 30,0 mm 🌀 3,0 mm 🏺 1,8 g 🍷 plastic (blue)



2005 (1000 Years Kazan)

🌀 30,0 mm 🌀 3,0 mm 🏺 2,6 g 🍷 plastic (green)



2005 (1000 Years Kazan)

🌀 30,0 mm 🌀 3,0 mm 🏺 1,8 g 🍷 plastic (dark green)



2005 (1000 Years Kazan, small font)

🌀 30,0 mm 🌀 3,0 mm 🏺 2,1 g 🍷 plastic (dark green)

## Moscow



1935

🌀 19,0 mm 🌀 1,6 mm 🏺 2,8 g 🍷 bronze



1955 to 1960

🌀 18,5 mm 🌀 1,4 mm 🏺 2,8 g 🍷 copper-nickel



1992

🌀 25,0 mm 🌀 1,6 mm 🏺 5,3 g 🍷 copper-plated steel



1992 to 1999

🌀 24,8 mm 🌀 2,1 mm 🏺 0,9 g 🗃 plastic (yellow-green, transparent)



1992 to 1999 (large circles above and below „M“)

🌀 24,8 mm 🌀 2,1 mm 🏺 0,9 g 🗃 plastic (yellow-green, transparent)



1992 to 1999 (small circles above and below „M“)

🌀 24,8 mm 🌀 2,0 mm 🏺 0,9 g 🗃 plastic (yellow-green, transparent)



1992 to 1999 (on reverse letters much thinner)

🌀 24,8 mm 🌀 2,1 mm 🏺 0,9 g 🗃 plastic (yellow-green, transparent)



1992 to 1999 (obverse and reverse misaligned)

🌀 25,0 mm 🌀 2,1 mm 🏺 0,8 g 🗃 plastic (yellow-green, transparent)



1992 to 1999 (bold „M“)

🌀 25,0 mm 🌀 2,0 mm 🏺 0,9 g 🗃 plastic (yellow-green, transparent)



1995 (60 Years Moscow Metro)

🌀 24,8 mm 🌀 2,2 mm 🏺 0,9 g 🗃 plastic (green, transparent)



2015 (copy of 1935er token – 80 Years Moscow Metro)

🌀 19,0 mm 🌀 1,6 mm 🏺 2,5 g 🗃 bronze



2015 (copy of 1935er token – 80 Years Moscow Metro)

🌀 19,0 mm 🌀 1,6 mm 🏺 2,1 g 🗃 bronze





2018 (Troika)

○ 30,0 mm ○ 3,0 mm ⚖️ 2,3 g 🗑️ plastic (yellow)



2018 (Troika)

○ 30,0 mm ○ 3,0 mm ⚖️ 2,3 g 🗑️ plastic (red)



2018 (Troika)

○ 30,0 mm ○ 3,0 mm ⚖️ 2,3 g 🗑️ plastic (blue)



2018 (Troika)

○ 30,0 mm ○ 3,0 mm ⚖️ 2,3 g 🗑️ plastic (green)



2018 (Troika)

○ 30,0 mm ○ 3,0 mm ⚖️ 2,3 g 🗑️ plastic (grey)

### Nizhny Novgorod



1992 to 2010

○ 23,3 mm ○ 1,6 mm ⚖️ 4,4 g 🗑️ brass



2010

○ 23,3 mm ○ 1,6 mm ⚖️ 4,1 g 🗑️ brass

## Novosibirsk



1992 to 1995

24,0 mm 1,5 mm 4,5 g copper-nickel



1993

24,0 mm 1,4 mm 4,8 g copper-plated steel



1993

24,0 mm 1,4 mm 4,7 g brass-coated steel

## Samara



1992

23,3 mm 1,6 mm 4,4 g brass



1992

23,3 mm 2,2 mm 1,8 g plastic (black)



1995 (with dot, one wave)

23,3 mm 2,2 mm 1,8 g plastic (black)



1995 (with dot, two waves)

23,3 mm 2,2 mm 2,1 g plastic (black)



1995 (without dot, one wave)

23,3 mm 2,2 mm 2,0 g plastic (black)

## Saint Petersburg



1958 to 1961

🌀 21,0 mm 🌀 1,4 mm 🌀 3,7 g 🌀 copper-nickel



1992 (small separator)

🌀 23,3 mm 🌀 1,5 mm 🌀 4,3 g 🌀 brass



1992 (large separator)

🌀 23,3 mm 🌀 1,5 mm 🌀 4,3 g 🌀 brass



1992 (thin font)

🌀 23,3 mm 🌀 1,5 mm 🌀 4,4 g 🌀 brass



2006 to 2009 (luggage token)

🌀 23,2 mm 🌀 1,6 mm 🌀 0,9 g 🌀 plastic (white)



2014 (60 Years Saint Petersburg Metro)

🌀 23,2 mm 🌀 1,6 mm 🌀 4,4 g 🌀 brass

## South Korea

### Busan



2011 (single ticket, blue border)

🌀 35,0 mm 🌀 2,1 mm 🌀 2,8 g 🌀 plastic (blue)





2011 (reduced ticket, blue border)

35,0 mm 2,1 mm 2,8 g plastic (green)



2011 (free pass, blue border)

35,0 mm 2,1 mm 2,8 g plastic (red)



2011 (exit ticket, blue border)

35,0 mm 2,1 mm 2,8 g plastic (yellow)



2011 (reduced ticket)

35,0 mm 2,1 mm 3,0 g plastic (green)



2016 (Donghae line)

35,0 mm 2,1 mm 3,0 g plastic (light blue, white)

Daegu



1997? (reduced ticket)

35,0 mm 1,6 mm 2,3 g plastic (yellow, white, black)



1997? (free pass: TIT – Tongmyung University Busan)

35,0 mm 1,6 mm 2,3 g plastic (blue, white, black)



1997? (free pass: „Let's be the TITian“ – Tongmyung University Busan)

35,0 mm 1,6 mm 2,1 g plastic (blue, white, black)



1997? (single ticket: „Let's be the TITian“ – Tongmyung University Busan)

35,0 mm 1,6 mm 2,3 g plastic (green, white, black)



2014 (single ticket)

35,0 mm 1,6 mm 2,1 g plastic (light blue, blue)



2014 (free pass)

35,0 mm 1,6 mm 2,2 g plastic (yellow, blue)



2014 (free pass, with year and month)

35,0 mm 1,6 mm 2,2 g plastic (yellow, blue)



2014 (exit ticket)

35,0 mm 1,6 mm 2,1 g plastic (light violet, blue)



2015 (free pass, with year and month)

35,0 mm 1,6 mm 2,2 g plastic (yellow, blue)



2015 (Sky Rail)

35,0 mm 1,6 mm 2,2 g plastic (red, yellow)

## Daejeon



2006? (single ticket)

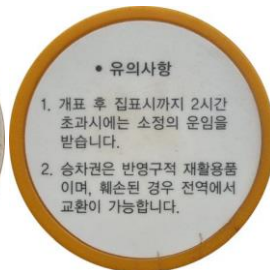
35,0 mm 2,0 mm 2,5 g plastic (blue)



2006? (reduced ticket)

35,0 mm 2,0 mm 2,5 g plastic (green)

## Gwangju



2004? (single ticket)

35,0 mm 1,6 mm 2,2 g plastic (yellow, grey, black)





2004? (single ticket: Samsung anycar)

35,0 mm 1,5 mm 2,1 g plastic (yellow, grey, blue)



2004? (reduced ticket: Samsung anycar)

35,0 mm 1,5 mm 2,1 g plastic (yellow, green, blue)

### Uijeongbu



2012 (VAL)

35,0 mm 2,1 mm 1,7 g plastic (blue, yellow, white)

### Yongin



2013

35,0 mm 2,1 mm 1,7 g plastic (light green, white)

---

## Taiwan

### Kaohsiung



2008 (small font on reverse)

30,0 mm 3,0 mm 2,7 g plastic (blue)

2008 (large font on reverse)

30,0 mm 3,0 mm 2,7 g plastic (blue)

## Taichung



2021

🌀 30,0 mm 🌀 3,0 mm 🧑 1,7 g 🗑️ plastic (green)

Commemorative issue for reaching 10 million passengers in Metro Taichung



2022 (10 million passengers)

🌀 30,0 mm 🌀 3,0 mm 🧑 1,8 g 🗑️ plastic (black)

## Taipei



1996 (test token)

🌀 30,0 mm 🌀 3,0 mm 🧑 2,3 g 🗑️ plastic (blue)



1996

🌀 30,0 mm 🌀 3,0 mm 🧑 2,3 g 🗑️ plastic (blue)



1996 (reverse with number „102“)

🌀 30,0 mm 🌀 3,0 mm 🧑 2,1 g 🗑️ plastic (blue)



2016 (20 Years Metro Taipei)

🌀 30,0 mm 🌀 3,0 mm 🧑 2,0 g 🗑️ plastic (light brown)



2016 (20 Years Metro Taipei)

🌀 30,0 mm 🌀 3,0 mm 🧑 2,1 g 🌀 plastic (red)



2016 (20 Years Metro Taipei)

🌀 30,0 mm 🌀 3,0 mm 🧑 2,1 g 🌀 plastic (green)



2016 (20 Years Metro Taipei)

🌀 30,0 mm 🌀 3,0 mm 🧑 2,0 g 🌀 plastic (yellow)



2016 (20 Years Metro Taipei)

🌀 30,0 mm 🌀 3,0 mm 🧑 2,0 g 🌀 plastic (blue)

Commemorative issue Taipei Sommer Universiade 2017 (5 tokens)



2017 (Summer Universiade, baseball)

🌀 30,0 mm 🌀 3,0 mm 🧑 2,3 g 🌀 plastic (white, black)



2017 (Summer Universiade, weightlifting)

🌀 30,0 mm 🌀 3,0 mm 🧑 2,3 g 🌀 plastic (white, black)





2017 (Summer Universiade, golf)

30,0 mm 3,0 mm 2,3 g plastic (white, black)



2017 (Summer Universiade, torch relay)

30,0 mm 3,0 mm 2,3 g plastic (white, black)



2017 (Summer Universiade, badminton)

30,0 mm 3,0 mm 2,3 g plastic (white, black)



2019 (Longshan Temple Lucky Trip)

30,0 mm 3,0 mm 2,1 g plastic (pink)



2019 (Xia-Hai City God Temple)

30,0 mm 3,0 mm 2,0 g plastic (light red)



2020 (Year of Rat, Guandu Temple)

30,0 mm 3,0 mm 2,2 g plastic (red)



2020 (Year of Rat, Guandu Temple)

30,0 mm 3,0 mm 2,2 g plastic (orange)



2020 (Year of Rat, Guandu Temple)  
 ⓪ 30,0 mm Ⓜ 3,0 mm ⚖️ 2,2 g 🗑️ plastic (yellow)



2020 (travel pass)  
 ⓪ 30,0 mm Ⓜ 3,0 mm ⚖️ 2,0 g 🗑️ plastic (red)

## Taoyuan



2015 (10406)  
 ⓪ 30,0 mm Ⓜ 3,0 mm ⚖️ 2,3 g 🗑️ plastic (violet)



2017 (10608)  
 ⓪ 30,0 mm Ⓜ 3,0 mm ⚖️ 2,1 g 🗑️ plastic (violet)

2019 (10810)  
 ⓪ 30,0 mm Ⓜ 3,0 mm ⚖️ 2,3 g 🗑️ plastic (violet)



2021 (11008)  
 ⓪ 30,0 mm Ⓜ 3,0 mm ⚖️ 2,2 g 🗑️ plastic (violet)

---

## Thailand

### Bangkok



2005 (BMCL)  
 ⓪ 30,0 mm Ⓜ 3,0 mm ⚖️ 2,6 g 🗑️ plastic (black)



2010 (Airport Rail Link)

🌀 30,0 mm 🌀 3,0 mm 🧑 2,7 g 🗑️ plastic (black)



2010 (Airport Rail Link)

🌀 30,0 mm 🌀 3,0 mm 🧑 2,3 g 🗑️ plastic (red)



2010 (Airport Rail Link, bold font)

🌀 30,0 mm 🌀 3,0 mm 🧑 2,4 g 🗑️ plastic (red)



2010 (Airport Rail Link)

🌀 30,0 mm 🌀 3,0 mm 🧑 2,5 g 🗑️ plastic (yellow)



2015 (BMCL)

🌀 30,0 mm 🌀 3,0 mm 🧑 2,5 g 🗑️ plastic (black)



2016 (BEM)

🌀 30,0 mm 🌀 3,1 mm 🧑 2,7 g 🗑️ plastic (black)



2016 (MRTA)

🌀 30,0 mm 🌀 3,1 mm 🧑 2,7 g 🗑️ plastic (black)



## Turkey

### Istanbul



1971 (I.E.T.T. Tünel)

19,0 mm 1,6 mm 3,8 g brass



1980er (I.E.T.T. Tünel)

19,0 mm 1,7 mm 3,8 g nickel

1980er (I.E.T.T. Tünel)

17,? mm 2,2 mm 3,8? g brass



1989 (I.E.T.T. Tünel)

15,0 mm 1,8 mm 2,6 g brass



1990

20,0 mm 2,0 mm 5,1 g copper-nickel



1990

22,4 mm 1,6 mm 5,1 g copper-nickel



2009

30,0 mm 3,0 mm 2,5 g plastic (blue)



2009

26,0 mm 3,0 mm 1,9 g plastic (red)



2010

30,0 mm 3,0 mm 2,3 g plastic (yellow)



2010  
 ⓪ 30,0 mm Ⓜ 2,6 mm ⚖ 2,0 g 🗑 plastic (yellow)



2012  
 ⓪ 26,0 mm Ⓜ 3,0 mm ⚖ 1,9 g 🗑 plastic (red)

## Izmir



2000  
 ⓪ 22,4 mm Ⓜ 1,5 mm ⚖ 4,6 g 🗑 brass

## Ukraine

### Kharkiv



01.06.1992 (coat of arms of Ukraine)  
 ⓪ 25,0 mm Ⓜ 2,2 mm ⚖ 0,9 g 🗑 plastic (orange, transparent)



01.06.1992 (Salamander insurance)  
 ⓪ 25,0 mm Ⓜ 2,2 mm ⚖ 0,9 g 🗑 plastic (orange, transparent)



01.06.1992 (Salamander insurance, reverse rotated by 90°)  
 ⓪ 25,0 mm Ⓜ 2,2 mm ⚖ 0,9 g 🗑 plastic (orange, transparent)



August 1992 (coat of arms of Ukraine, wide font)  
 ⓪ 25,0 mm Ⓜ 2,2 mm ⚖ 0,9 g 🗑 plastic (orange, transparent)



August 1992 (Salamander insurance, wide font)

25,0 mm 2,2 mm 0,9 g plastic (orange, transparent)



August 1992 (Stank)

25,0 mm 2,2 mm 0,9 g plastic (orange, transparent)



26.12.1992 (coat of arms of Ukraine)

25,0 mm 2,2 mm 0,9 g plastic (orange)



26.12.1992 (Salamander insurance)

25,0 mm 2,2 mm 0,9 g plastic (orange)



26.12.1992 (coat of arms of Ukraine, wide font)

25,0 mm 2,0 mm 0,8 g plastic (orange)



26.12.1992 (Stank)

25,0 mm 2,1 mm 0,8 g plastic (orange)



Mai 1993 (Stank)

25,0 mm 2,3 mm 0,9 g plastic (orange)



Mai 1993 (Stank, coin alignment)

25,0 mm 2,2 mm 0,8 g plastic (orange)





1993 (coat of arms of Ukraine)

25,0 mm 2,2 mm 0,8 g plastic (orange)



1993 (coat of arms of Ukraine, writing and reverse rotated)

25,0 mm 2,2 mm 0,8 g plastic (orange)



1993 (coat of arms of Kharkiv 1654)

25,0 mm 2,2 mm 0,8 g plastic (orange)



1993 (coat of arms of Kharkiv 1781)

25,0 mm 2,2 mm 0,8 g plastic (orange)



1993 (coat of arms of Kharkiv 1878)

25,0 mm 2,0 mm 0,7 g plastic (orange)



1993 (coat of arms of Kharkiv 1968)

25,0 mm 2,2 mm 0,8 g plastic (orange)



1993 (logo of Kharkiv Metro)

25,0 mm 2,2 mm 0,8 g plastic (orange)



1993 (stylized letter „M“)

25,0 mm 2,2 mm 0,8 g plastic (orange)



Oktober 1994 (Stank, bold „M“)

🌀 25,0 mm 🌀 2,2 mm 🏺 0,8 g 🗑️ plastic (orange)



29.01.1996 (Stank)

🌀 25,0 mm 🌀 2,2 mm 🏺 0,8 g 🗑️ plastic (light green)



April 1996 (coat of arms of Kharkiv 1781)

🌀 25,0 mm 🌀 2,2 mm 🏺 0,8 g 🗑️ plastic (light green)



April 1996 (coat of arms of Kharkiv 1781, „M“ rotated)

🌀 25,0 mm 🌀 2,2 mm 🏺 0,8 g 🗑️ plastic (light green)



April 1996 (coat of arms of Kharkiv 1781, wide font)

🌀 25,4 mm 🌀 2,2 mm 🏺 0,8 g 🗑️ plastic (light green)



2000 (logo of Kharkiv Metro)

🌀 25,0 mm 🌀 2,2 mm 🏺 0,9 g 🗑️ plastic (green, transparent)



2003 (logo of Kharkiv Metro with letter „П“)

🌀 25,0 mm 🌀 2,2 mm 🏺 0,9 g 🗑️ plastic (green, transparent)



2003 (logo of Kharkiv Metro with letter „П“, wide font)

🌀 25,0 mm 🌀 2,2 mm 🏺 0,8 g 🗑️ plastic (green, transparent)



2009 (logo of Kharkiv Metro with letter „П“)

25,0 mm 2,2 mm 0,9 g plastic (blue, transparent)



2009 (logo of Kharkiv Metro with letter „П“ lying)

25,0 mm 2,2 mm 0,9 g plastic (blue, transparent)



2009 (logo of Kharkiv Metro with letter „П“, wide font)

25,0 mm 2,2 mm 0,9 g plastic (blue, transparent)



2010 (logo of Kharkiv Metro with letter „П“)

25,0 mm 2,2 mm 0,9 g plastic (blue green, transparent)



2010 (logo of Kharkiv Metro with letter „П“ lying)

25,0 mm 2,2 mm 0,9 g plastic (blue green, transparent)



2010 (logo of Kharkiv Metro with letter „П“, dots as separator)

25,0 mm 2,2 mm 0,9 g plastic (blue green, transparent)



2012 (coat of arms of Kharkiv 1781)

25,0 mm 2,2 mm 0,7 g plastic (blue green, transparent)



2012 (Kharko monument)

25,0 mm 2,2 mm 0,8 g plastic (blue green, transparent)





2012 (Taras Shevchenko monument)

25,0 mm 2,2 mm 0,8 g plastic (blue green, transparent)



2012 (Mirror Stream fountain)

25,0 mm 2,2 mm 0,8 g plastic (blue green, transparent)

### Dnipro



1995

24,8 mm 2,2 mm 0,9 g plastic (light green)

### Kiev



1992 to 1994 (type 721.4)

21,3 mm 1,4 mm 2,8 g brass



1992 to 1994 (type 721.4: bold font, petal bottom right is bordered)

21,3 mm 1,4 mm 3,1 g brass



1992 to 1994 (type 721.5: thin ring)

21,3 mm 1,4 mm 3,0 g brass



1992 to 1994 (type 721: large font, triple ring)

21,3 mm 1,4 mm 3,3 g brass



1992 to 1994 (type 721.2: large font, large distance of Ì dots)

21,2 mm 1,4 mm 3,1 g brass



1992 to 1994 (type 721.2: large font, Ì dots misaligned)

21,3 mm 1,4 mm 3,2 g brass



1992 to 1994 (type 721.3: large font, petal bottom left is bordered)  
○ 21,1 mm    ⬭ 1,4 mm    ⚖ 2,7 g    🪙 brass



1992 to 1994 (type 721.1: chestnut leaf on both sides)  
○ 21,2 mm    ⬭ 1,4 mm    ⚖ 3,0 g    🪙 brass



1993 to 1994 (type 723: Bank Aval)  
○ 17,2 mm    ⬭ 1,5 mm    ⚖ 1,9 g    🪙 brass



1993 to 1994 (type 723.1: Bank Aval, not filled)  
○ 17,2 mm    ⬭ 1,5 mm    ⚖ 1,9 g    🪙 brass



1993 to 1994 (type 723.2: Bank Aval, not filled, double border)  
○ 17,2 mm    ⬭ 1,5 mm    ⚖ 2,0 g    🪙 brass



1993 to 1994 (type 722)  
○ 17,2 mm    ⬭ 1,5 mm    ⚖ 2,0 g    🪙 brass



1994 (type 724: round „M“)  
○ 25,0 mm    ⬭ 2,2 mm    ⚖ 0,9 g    🪙 plastic (light blue)



1994 (type 724.1: round „M“)  
○ 25,0 mm    ⬭ 2,2 mm    ⚖ 0,9 g    🪙 plastic (dark blue)



1994 (type 724: sample for Metro Tashkent)  
○ 25,0 mm    ⬭ 2,2 mm    ⚖ 0,9 g    🪙 plastic (dark blue, transparent)



1994 (round „M“, bold font)  
25,0 mm 2,2 mm 0,9 g plastic (light blue)



1994 (round „M“, bold font, ï dots misaligned)  
25,0 mm 2,2 mm 0,8 g plastic (light blue)



1994 (round „M“, bold font rotated by 180°)  
25,0 mm 2,2 mm 0,9 g plastic (light blue)



1994 (type 725: edgy „M“)  
25,0 mm 2,2 mm 0,9 g plastic (light blue)



1994 (type 725: edgy „M“, coin alignment)  
25,0 mm 2,2 mm 0,9 g plastic (light blue)



1994 (type 726.5: edgy „M“, writing rotated by 180°)  
25,0 mm 2,2 mm 0,8 g plastic (light blue)



1994 (type 726.5: edgy „M“, „M“ rotated by 180°)  
25,0 mm 2,3 mm 0,8 g plastic (light blue)



1994 (type 726: Key Trust)  
25,0 mm 2,2 mm 0,9 g plastic (light blue)





1994 (type 726: Key Trust, „M“ rotated by 180°)

🌀 25,0 mm 🌀 2,2 mm 🍷 0,9 g 🗑️ plastic (light blue)



1994 (type 726.2: Spectr Trust)

🌀 25,0 mm 🌀 2,2 mm 🍷 0,8 g 🗑️ plastic (light blue)



1994 (type 726.4: Spectr Trust, „M“ rotated by 180°)

🌀 25,0 mm 🌀 2,2 mm 🍷 0,9 g 🗑️ plastic (light blue)



1994 (type 727: Spectr Trust, without „M“)

🌀 25,0 mm 🌀 2,2 mm 🍷 0,9 g 🗑️ plastic (light blue)



1994 (type 728: Olbi Ukraina, round „M“)

🌀 25,0 mm 🌀 2,2 mm 🍷 0,8 g 🗑️ plastic (light blue)



1994 (type 728: Olbi Ukraina, round „M“, coin alignment)

🌀 25,0 mm 🌀 2,2 mm 🍷 0,9 g 🗑️ plastic (light blue)



1994 (type 726.1: Olbi Ukraina, edgy „M“)

🌀 25,0 mm 🌀 2,2 mm 🍷 0,8 g 🗑️ plastic (light blue)



1994 (type 726.1: Olbi Ukraina, edgy „M“ rotated)

🌀 25,0 mm 🌀 2,2 mm 🍷 0,9 g 🗑️ plastic (light blue)



1994 (type 726.1: Olbi Ukraina, edgy „M“)  
25,0 mm 2,4 mm 0,9 g plastic (orange)



1994 (type 726.1: Olbi Ukraina, edgy „M“)  
25,0 mm 2,4 mm 0,9 g plastic (red)



2000 (type 729: chestnut leaf)  
25,0 mm 2,2 mm 0,9 g plastic (dark blue)



2000 (type 729: chestnut leaf)  
25,0 mm 2,2 mm 0,8 g plastic (blue)



2000 (type 729: chestnut leaf)  
25,0 mm 2,2 mm 0,9 g plastic (light blue)



2000 (type 729: chestnut leaf)  
25,0 mm 2,2 mm 0,9 g plastic (blue grey)



2000 (type 729: chestnut leaf)  
25,0 mm 2,2 mm 0,8 g plastic (dark green)



2000 (type 729: chestnut leaf)  
25,0 mm 2,2 mm 0,9 g plastic (green)



2003 (type 730: logo of Kiev Metro)

🌀 25,0 mm 🌀 2,2 mm 🍷 0,8 g 🗑️ plastic (dark blue)



2003 (type 730: logo of Kiev Metro)

🌀 25,0 mm 🌀 2,2 mm 🍷 0,8 g 🗑️ plastic (blue)



2003 (type 730b: logo of Kiev Metro)

🌀 25,0 mm 🌀 2,2 mm 🍷 0,8 g 🗑️ plastic (light blue)



2003 (type 730: logo of Kiev Metro)

🌀 25,0 mm 🌀 2,2 mm 🍷 0,9 g 🗑️ plastic (blue green)



2003 (type 730: logo of Kiev Metro)

🌀 25,0 mm 🌀 2,2 mm 🍷 0,9 g 🗑️ plastic (dark green)



2003 (type 730: logo of Kiev Metro)

🌀 25,0 mm 🌀 2,2 mm 🍷 0,8 g 🗑️ plastic (green)



2003 (type 730a: logo of Kiev Metro)

🌀 25,0 mm 🌀 2,2 mm 🍷 0,9 g 🗑️ plastic (light green)



2010 (type 732: 50 years of Kiev Metro – Arsenalnaya)

🌀 25,0 mm 🌀 2,2 mm 🍷 0,9 g 🗑️ plastic (dark blue)





2010 (type 732: 50 years of Kiev Metro – Arsenalnaya)  
🌀 25,0 mm 🌀 2,2 mm 🌀 0,9 g 🌀 plastic (light blue)



2010 (type 735: 50 years of Kiev Metro – Voksalnaya)  
🌀 25,0 mm 🌀 2,2 mm 🌀 0,9 g 🌀 plastic (dark blue)



2010 (type 735: 50 years of Kiev Metro – Voksalnaya)  
🌀 25,0 mm 🌀 2,2 mm 🌀 0,9 g 🌀 plastic (light blue)



2010 (type 731: 50 years of Kiev Metro – Dnipro)  
🌀 25,0 mm 🌀 2,2 mm 🌀 0,9 g 🌀 plastic (dark blue)



2010 (type 731: 50 years of Kiev Metro – Dnipro)  
🌀 25,0 mm 🌀 2,2 mm 🌀 0,9 g 🌀 plastic (light blue)



2010 (type 733: 50 years of Kiev Metro – Khreshchatyk)  
🌀 25,0 mm 🌀 2,2 mm 🌀 0,9 g 🌀 plastic (dark blue)



2010 (type 733: 50 years of Kiev Metro – Khreshchatyk)  
🌀 25,0 mm 🌀 2,2 mm 🌀 0,9 g 🌀 plastic (light blue)



2010 (type 734: 50 years of Kiev Metro – University)  
🌀 25,0 mm 🌀 2,2 mm 🌀 0,9 g 🌀 plastic (dark blue)



2010 (type 734: 50 years of Kiev Metro – University)

🌀 25,0 mm 🌀 2,2 mm 🏊 0,9 g 🗃 plastic (light blue)

## Krywyj Rih



1992

🌀 25,0 mm 🌀 2,1 mm 🏊 0,8 g 🗃 plastic (orange, transparent)



1993

🌀 24,8 mm 🌀 2,3 mm 🏊 0,8 g 🗃 plastic (orange, transparent)



1993 (coin alignment)

🌀 24,8 mm 🌀 2,3 mm 🏊 0,8 g 🗃 plastic (orange, transparent)



1993

🌀 24,8 mm 🌀 2,3 mm 🏊 0,8 g 🗃 plastic (orange)

???

🌀 25,0 mm 🌀 2,1 mm 🏊 0,9 g 🗃 plastic (blue)

---

## USA

### Atlanta



1981

🌀 16,5 mm 🌀 1,2 mm 🏊 1,9 g 🗃 brass



1994 (Peachtree Road Race)

🌀 22,7 mm 🌀 2,0 mm 🏊 6,4 g 🗃 bronze



1994 (Super Bowl XXVIII)

🌀 22,7 mm 🌀 2,0 mm 🍷 6,6 g 🍷 brass



1995 (Greatest Show on Earth)

🌀 22,6 mm 🌀 2,0 mm 🍷 6,7 g 🍷 brass



1996 (Olympic Games)

🌀 22,7 mm 🌀 1,9 mm 🍷 6,4 g 🍷 nickel plated brass



1996 (Paralympics)

🌀 22,7 mm 🌀 1,9 mm 🍷 6,5 g 🍷 copper



2000 (Super Bowl XXXIV)

🌀 22,7 mm 🌀 1,9 mm 🍷 6,5 g 🍷 copper



2010

🌀 22,7 mm 🌀 1,9 mm 🍷 6,5 g 🍷 copper

## Boston



1951

🌀 20,0 mm 🌀 2,2 mm 🍷 5,1 g 🍷 brass



1987 (Southwest Corridor – Orange Line)

🌀 20,1 mm 🌀 2,1 mm 🍷 5,1 g 🍷 ?



1988 to 2006 (normal font)

🌀 20,0 mm 🌀 2,1 mm 🍷 5,0 g 🍷 brass





1988 to 2006 (bold font)  
🌀 20,0 mm 🌀 2,1 mm 🏺 5,0 g 🏺 brass



1992 (Sail Boston)  
🌀 20,0 mm 🌀 2,1 mm 🏺 5,0 g 🏺 brass



2000 (Millenium)  
🌀 ? mm 🌀 ? mm 🏺 ? g 🏺 ?

### Chicago



1924 to 1947 (CRT)  
🌀 22,8 mm 🌀 1,4 mm 🏺 3,7 g 🏺 copper-nickel



1950 (coin alignment)  
🌀 16,4 mm 🌀 1,1 mm 🏺 1,7 g 🏺 copper-nickel



1950 (coin alignment)  
🌀 16,4 mm 🌀 1,1 mm 🏺 1,7 g 🏺 copper plated copper-nickel



1950er ?  
🌀 16,4 mm 🌀 1,1 mm 🏺 1,7 g 🏺 copper-nickel



1957  
🌀 20,2 mm 🌀 1,2 mm 🏺 2,7 g 🏺 brass

### Los Angeles



1996 to 2019  
🌀 22,8 mm 🌀 1,3 mm 🏺 4,0 g 🏺 bimetal



1996 to 2019

22,8 mm 1,3 mm 4,0 g bimetal

### Miami



1990

22,8 mm 1,5 mm 4,4 g bimetal



1995 (Super Bowl XXIX)

22,8 mm 1,5 mm 4,5 g bimetal

### New Jersey



1965 to 1971 (PATH)

22,1 mm 1,4 mm 3,9 g brass

### New York



1939 to 1948

22,5 mm 1,8 mm 5,5 g white metal



1941 to 1948

23,5 mm 1,8 mm 5,3 g brass



1953 to 1970 (cut Y)

16,4 mm 1,2 mm 1,7 g brass



1953 to 1970 (uncut Y)

16,4 mm 1,1 mm 1,9 g brass

Token Pak 1953 to 1967



1966 to 1980 (Aqueduct Racetrack special fare token)

🌀 28,6 mm 🌀 2,3 mm 🏺 9,5 g 🌀 brass



1970 to 1980 (small Y)

🌀 22,8 mm 🌀 1,8 mm 🏺 4,7 g 🌀 brass



1970 to 1980 (large Y)

🌀 22,8 mm 🌀 1,8 mm 🏺 4,7 g 🌀 brass



1979 to 1980

🌀 22,8 mm 🌀 1,6 mm 🏺 4,8 g 🌀 brass



1980 to 1986

🌀 22,2 mm 🌀 1,4 mm 🏺 3,9 g 🌀 brass



1980 (Aqueduct Racetrack special fare token)

🌀 23,4 mm 🌀 1,4 mm 🏺 4,4 g 🌀 Stahl





1986 to 1989 (SJD)

○ 22,1 mm    ⬭ 1,4 mm    ⚖ 3,8 g    🗡 bimetal



1989 to 1995

○ 22,1 mm    ⬭ 1,4 mm    ⚖ 3,8 g    🗡 bimetal



1990 to 1992 (Archer Avenue Extension)

○ 22,1 mm    ⬭ 1,4 mm    ⚖ 3,8 g    🗡 bimetal



1995 to 2003

○ 20,0 mm    ⬭ 1,4 mm    ⚖ 3,2 g    🗡 brass

## Philadelphia



1924 (PRT)

○ 16,4 mm    ⬭ 1,1 mm    ⚖ 1,7 g    🗡 copper-nickel



1924 (PRT for children)

○ 22,9 mm    ⬭ ?? mm    ⚖ 4,2 g    🗡 brass



1936 (PRT, Bridge Line)

○ 22,4 mm    ⬭ 1,8 mm    ⚖ 5,0 g    🗡 brass



1942 (PTC)

○ 16,4 mm    ⬭ 1,2 mm    ⚖ 1,7 g    🗡 white metal



1940er (PTC, Bridge Line)

○ 22,4 mm    ⬭ 1,6 mm    ⚖ 4,6 g    🗡 brass



1949 (PTC, „ONE CASH FARE“)  
○ 20,0 mm ◌ 1,4 mm 🏠 3,2 g 🪙 brass



1949 (PTC, „ONE FARE“)  
○ 20,0 mm ◌ 1,4 mm 🏠 3,3 g 🪙 brass



1949 (PTC, without legend)  
○ 20,0 mm ◌ 1,4 mm 🏠 3,3 g 🪙 brass



1949 (PTC, without legend, short wing)  
○ 20,0 mm ◌ 1,4 mm 🏠 3,3 g 🪙 brass



1952 (PTC)  
○ 16,4 mm ◌ 1,2 mm 🏠 1,8 g 🪙 brass



1950er (PTC, Bridge Line)  
○ 22,4 mm ◌ 1,6 mm 🏠 4,8 g 🪙 copper-nickel



1975 to 1990 (SEPTA)  
○ 22,2 mm ◌ 1,6 mm 🏠 5,1 g 🪙 brass



1975 (SEPTA School Token)  
○ 20,0 mm ◌ 1,3 mm 🏠 3,2 g 🪙 copper-nickel



1976 (SEPTA, 200 years independence)  
○ 22,4 mm ◌ 1,8 mm 🏠 5,0 g 🪙 brass



1979  
○ 22,2 mm ◌ 1,4 mm 🏠 4,0 g 🪙 brass



1990 to 2018 (SEPTA)

22,2 mm 1,4 mm 4,0 g copper-nickel, bronze strip



1994 to 2018 (SEPTA)

??,0 mm 1,4 mm ??,? g bronze, copper-nickel strip

## Washington



1973

22,8 mm 1,4 mm 3,5 g copper-nickel



1973

19,8 mm 1,4 mm 2,2 g brass



1982

19,8 mm 1,4 mm 2,9 g copper-nickel

## Uzbekistan

### Taschkent



1992 (Variante A)

24,0 mm 1,2 mm 3,7 g brass



1992 (variant B)

24,0 mm 1,2 mm 3,8 g brass



1992 (variant C)

24,0 mm 1,2 mm 3,9 g brass





1995 (type 1: thin and wide „M“, without separator, logo not striped)

🌀 25,0 mm 🌀 2,4 mm 🌀 1,1 g 🌀 plastic (blue)



1995 (type 1: thin and wide „M“, without separator, logo not striped)

🌀 25,0 mm 🌀 2,4 mm 🌀 1,1 g 🌀 plastic (blue green)



1995 (type 1: thin and wide „M“, without separator, logo not striped)

🌀 25,0 mm 🌀 2,4 mm 🌀 1,1 g 🌀 plastic (light blue)



1995 (type 2a: thin „M“, with separator)

🌀 24,8 mm 🌀 2,3 mm 🌀 0,8 g 🌀 plastic (blue)



1995 (type 2a: thin and rotated „M“, with separator)

🌀 24,8 mm 🌀 2,3 mm 🌀 0,9 g 🌀 plastic (blue)



1995 (type 2a: thin „M“, with separator, reverse rotated)

🌀 24,8 mm 🌀 2,2 mm 🌀 0,8 g 🌀 plastic (blue)



1995 (type 2b: thin „M“, without separator)

🌀 24,8 mm 🌀 2,3 mm 🌀 0,8 g 🌀 plastic (blue)



1995 (type 3a: bold „M“, with separator, logo striped)

🌀 25,0 mm 🌀 2,4 mm 🌀 0,9 g 🌀 plastic (blue)



1995 (type 3a: bold „M“, with separator, logo striped)  
🌀 25,0 mm 🌀 2,4 mm 🌀 0,9 g 🌀 plastic (dark blue)



1995 (type 3a: bold „M“, with separator, logo striped)  
🌀 25,0 mm 🌀 2,4 mm 🌀 0,9 g 🌀 plastic (blue green)



1995 (type 3b: bold „M“, without separator, logo striped)  
🌀 25,0 mm 🌀 2,4 mm 🌀 0,9 g 🌀 plastic (blue)



1995 (type 4<sup>4.4.4</sup>: bold „M“, with separator, logo not striped, coin alignment)  
🌀 24,8 mm 🌀 2,4 mm 🌀 0,8 g 🌀 plastic (blue)